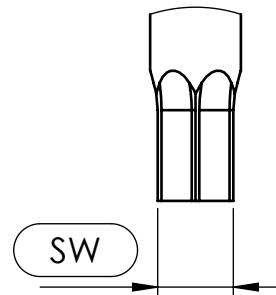
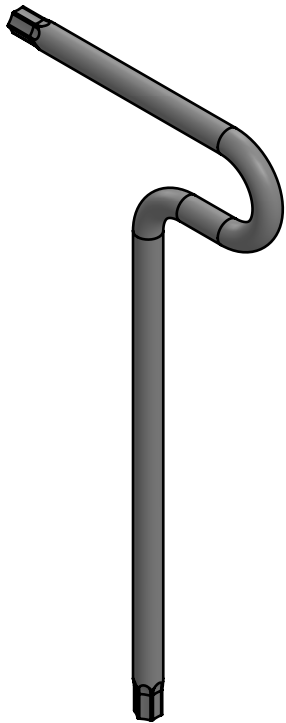
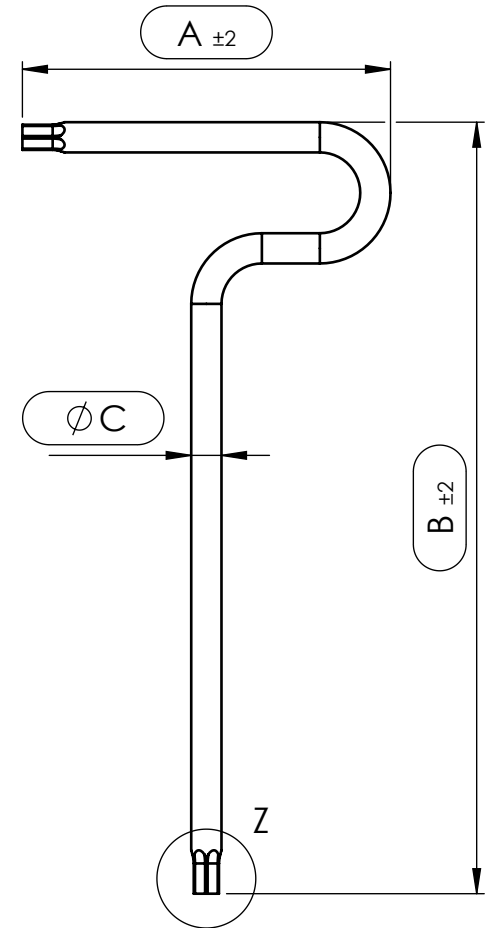


Artikelnummer	Schlüsselweite	A	B	C
30-06-03-1865	3	65	140	4
30-06-04-1865	4	69	147	5
30-06-05-1865	5	73	153	6
30-06-06-1865	6	77	160	7



DETAIL Z
MABSTAB 2 : 1



gehärtet HRC 53±2

NON DISCLOSURE AGREEMENT
This drawing and / or specification contains information confidential and proprietary to SMT Schilling Metalltechnik GmbH Germany; and is conditionally loaned only. By retention, the receipt agrees not to reproduce or copy it in whole or in part, disclose any or all of its contents without prior written permission, or to make any use of it contrary to SMT Schilling Metalltechnik interest.
SMT - Werkszeichnung; entspricht nicht nach DIN

		(Zul. Abweich.) DIN ISO 2768m	(Oberfl.) mattiert	Maßstab 1:1,5 (Werkstoff, Halbzeug, Rohteil-Modell-Gesenk-Nr.) Material 1.4034	Revision A
Toleranzen (mm) DIN ISO 2768m		DIN 6 T1 Proj.methode 1		BENENNUNG: Inbusschlüssel geschwungen, T-Form	
bis 6	6-30	30-120	120-400	400-1000	
± 0.1	± 0.2	± 0.3	± 0.5	± 0.8	
			DATUM	NAME	
			Erst. 23.02.2021	R.Schilling	
			Gep. 23.02.2021	A.Stuwe	
			Freig. 23.02.2021	E.Schilling	
A	Zeichnung erstellt.	23.02.21	RSCH	ZEICHNUNGSNR. 30-06-05-1865_tabelle	
Zust.	Änderung	DATUM	NAME	Blatt 1 1 VON 1	