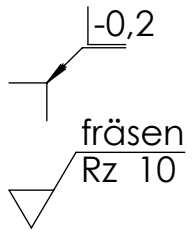
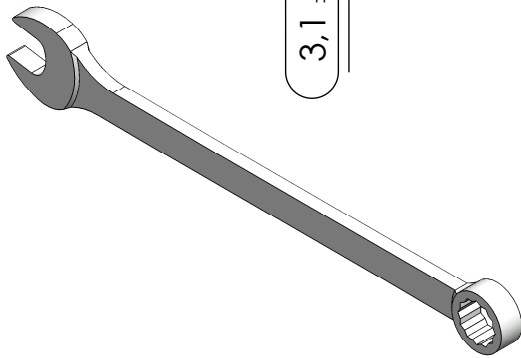
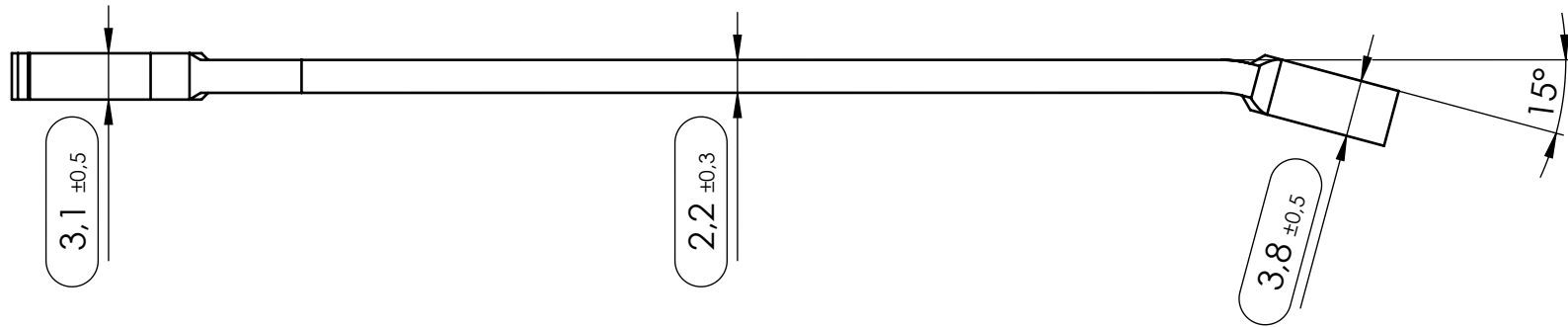
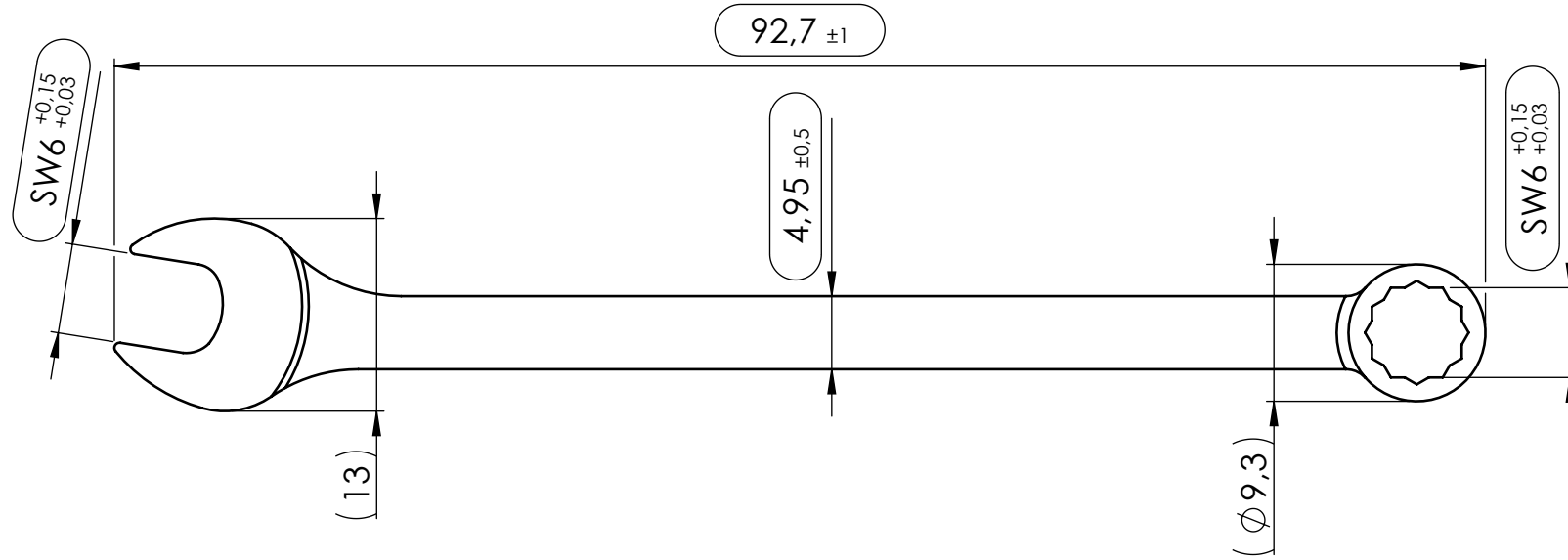


ungebogen:



Schlüsselweiten nach DIN ISO 691:2007-04

gehärtet HRC 47±3

NON DISCLOSURE AGREEMENT

This drawing and / or specification contains information confidential and proprietary to SMT Schilling Metalltechnik GmbH Germany; and is conditionally loaned only. By retention, the receipt agrees not to reproduce or copy it in whole or in part, disclose any or all of its contents without prior written permission, or to make any use of it contrary to SMT Schilling Metalltechnik interest.

SMT - Werkzeichnung; entspricht nicht nach DIN

		(Zul. Abweich.)	(Oberfl.)	Maßstab 2:1	Revision A
		DIN ISO 2768m	mattiert	(Werkstoff, Halbzeug, Rohteil-Modell-Gesenk-Nr.)	
Toleranzen (mm) DIN ISO 2768m				Material 1.4021	Abmessung Fl 6x15x100
bis 6	6-30	30-120	120-400	400-1000	
± 0.1	± 0.2	± 0.3	± 0.5	± 0.8	
		DIN 6 T1 Proj.methode 1		BENENNUNG:	
		DATUM	NAME	Gabel-Ring Schlüssel SW6	
		Erst. 18.09.2015	R.Schilling		
		Gep. 18.09.2015	A.Stuwe		
		Freig. 18.09.2015	E.Schilling		
A	Zeichnung erstellt.	18.09.15	RSCH	ZEICHNUNGSNR.	
Zust.	Änderung	DATUM	NAME	30-06-06-1802	
SMT Schilling Metalltechnik GmbH				Blatt 1	
				1 VON 1	