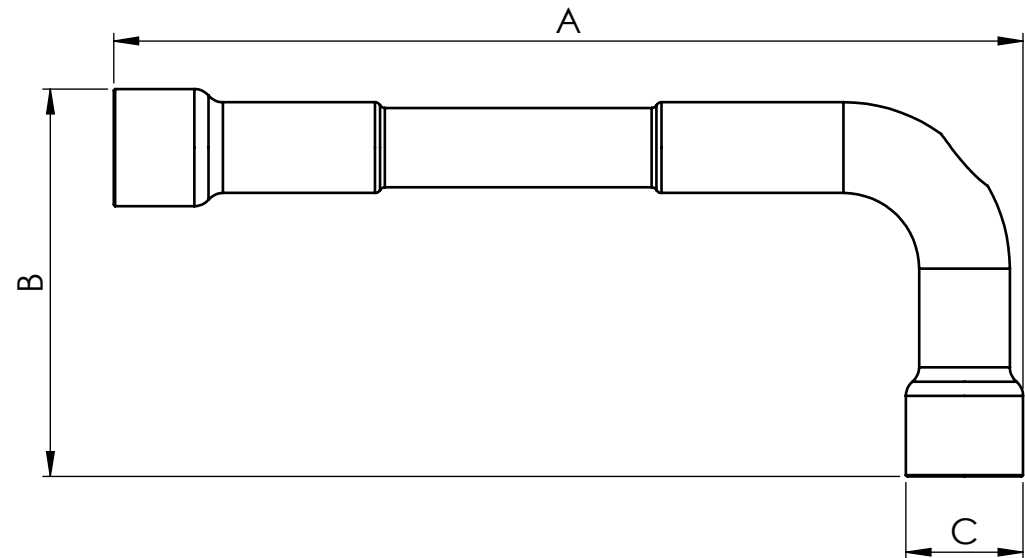


Size	Part-No.	A	B	C
6   +0,15/+0,03	30-06-06-1835	96   +4/-2	37   +0/-2	Ø10
7   +0,15/+0,03	30-06-07-1835	104   +3/-3	41   +0/-2	Ø11
8   +0,15/+0,03	30-06-08-1835	108   +0/-6	44   +0/-2	Ø13
9   +0,15/+0,03	30-06-09-1835	114   +0/-6	47   +0/-2	Ø15
10   +0,15/+0,03	30-06-10-1835	120   +5/-5	51   +5/-5	Ø15,5
11   +0,19/+0,04	30-06-11-1835	126,6   +3/-3	57,5   +2/-2	Ø17
13   +0,24/+0,04	30-06-13-1835	143,5   +3,5/-3,5	65   +1,5/-1,5	Ø19
14   +0,24/+0,04	30-06-14-1835	154   +0/-7	70   +0/-3	Ø20
15   +0,27/+0,05	30-06-15-1835	161   +0/-7	73   +0/-3	Ø20
17   +0,27/+0,05	30-06-17-1835	177   +0/-7	80   +0/-3	Ø26,2
19   +0,30/+0,05	30-06-19-1835	199   +0/-7	89   +0/-3	Ø29,3
21   +0,36/+0,06	30-06-21-1835	211   +0/-12	96   +0/-5	Ø31
22   +0,36/+0,06	30-06-22-1835	222,1   +0/-12	102   +0/-5	Ø32
24   +0,36/+0,06	30-06-24-1835	265   +0/-7	110   +0/-3	Ø34
27   +0,48/+0,08	30-06-27-1835	300   +0/-7	126   +0/-3	Ø38



hardness HRC 47±3

NON DISCLOSURE AGREEMENT  
This drawing and / or specification contains information confidential and proprietary to SMT Schilling Metalltechnik GmbH Germany; and is conditionally loaned only. By retention, the receipt agrees not to reproduce or copy it in whole or in part, disclose any or all of its contents without prior written permission, or to make any use of it contrary to SMT Schilling Metalltechnik interest.  
SMT - Werkzeichnung; entspricht nicht nach DIN

				(All. difference)			Scale 1:1	Revision B
				<b>DIN ISO 2768m</b>			(Material, workpiece, blank)	
						Material 1.4021		
						Designation:		
						<b>Double-sided socket wrench, curved</b>		
						ZEICHNUNGSNR.		
						30-06-10-1835_Table_eng		
						Sheet 1		
						1 by 1		