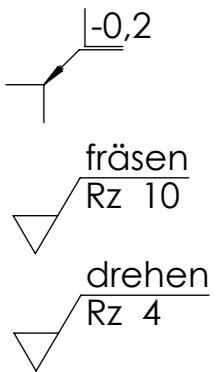
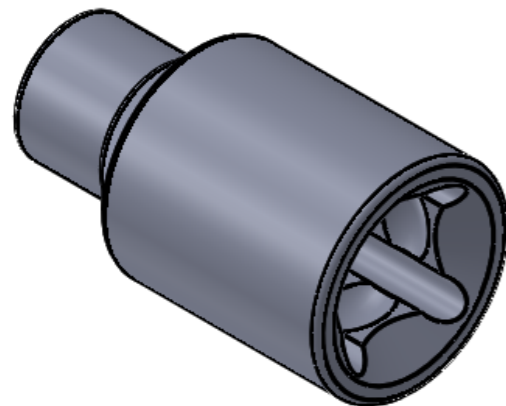
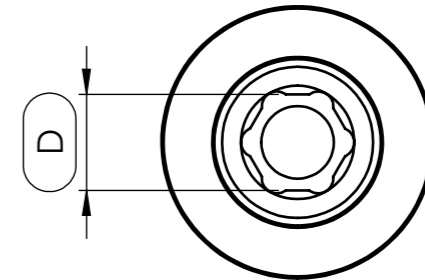
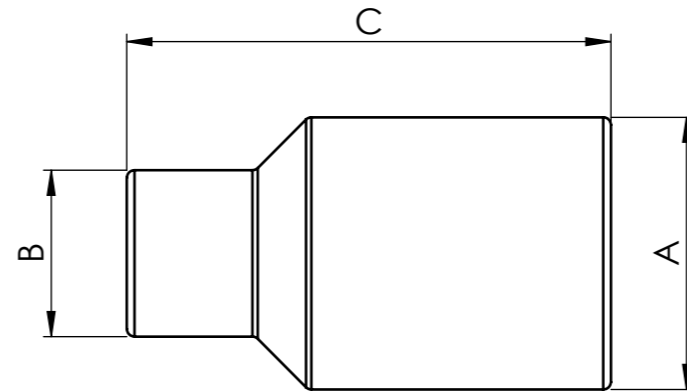
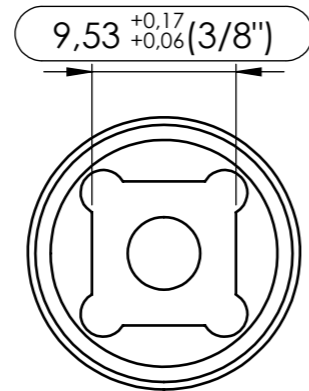


Artikelnummer	A	B	C	D (Schlüsselweite)
30-06-73-1847	Ø18	Ø11	32	1/4" +0,10 / +0,03
30-06-75-1847	Ø18	Ø11	32	5/16" +0,10 / +0,03
30-06-77-1847	Ø20	Ø13,5	32	3/8" +0,10 / +0,03
30-06-78-1847	Ø18	Ø16	32	7/16" +0,10 / +0,03
30-06-79-1847	Ø20	Ø18	32	1/2" +0,10 / +0,03
30-06-80-1847	Ø20	Ø20	32	9/16" +0,10 / +0,03
30-06-82-1847	Ø23	Ø22	35	5/8" +0,10 / +0,03
30-06-83-1847	Ø24,7	Ø24	35	11/16" +0,10 / +0,03
30-06-84-1847	Ø25,5	Ø26,5	35	3/4" +0,10 / +0,03
30-06-86-1847	Ø27	Ø28,5	35	13/16" +0,10 / +0,03
30-06-87-1847	Ø28	Ø29,7	38	7/8" +0,10 / +0,03
30-06-88-1847	Ø32,5	Ø32,5	38	15/16" +0,10 / +0,03
30-06-89-1847	Ø34	Ø34	38	1" +0,10 / +0,03



gehärtet HRC 47±3

NON DISCLOSURE AGREEMENT
 This drawing and / or specification contains information confidential and proprietary to SMT Schilling Metalltechnik GmbH Germany; and is conditionally loaned only. By retention, the receipt agrees not to reproduce or copy it in whole or in part, disclose any or all of its contents without prior written permission, or to make any use of it contrary to SMT Schilling Metalltechnik interest.
 SMT - Werkszeichnung; entspricht nicht nach DIN

(Zul. Abweich.) ISO 2768-m	(Oberfl.) mattiert	Maßstab 2:1 (Werkstoff, Halbzeug, Rohteil-Modell-Gesenk-Nr.)	Revision A
	DATUM NAME	BENENNUNG:	
	Erst. 25.09.2015 R.Schilling	Steckschlüssel Nuss 3/8" zu X"	
	Gep. 25.09.2015 E.Schilling		
		ZEICHNUNGSNR. 30-06-73-1847_Tabelle	Blatt 1 1 VON 1
A	Zeichnung erstellt.	25.09.15	RSCH
Zust.	Änderung	DATUM	NAME